



# Pinellas Safe Start Tier II Evaluation Update

**Sandra Ortega**  
**Evaluator's Meeting: New Orleans**  
**May 12, 2005**

## Tier II Focus

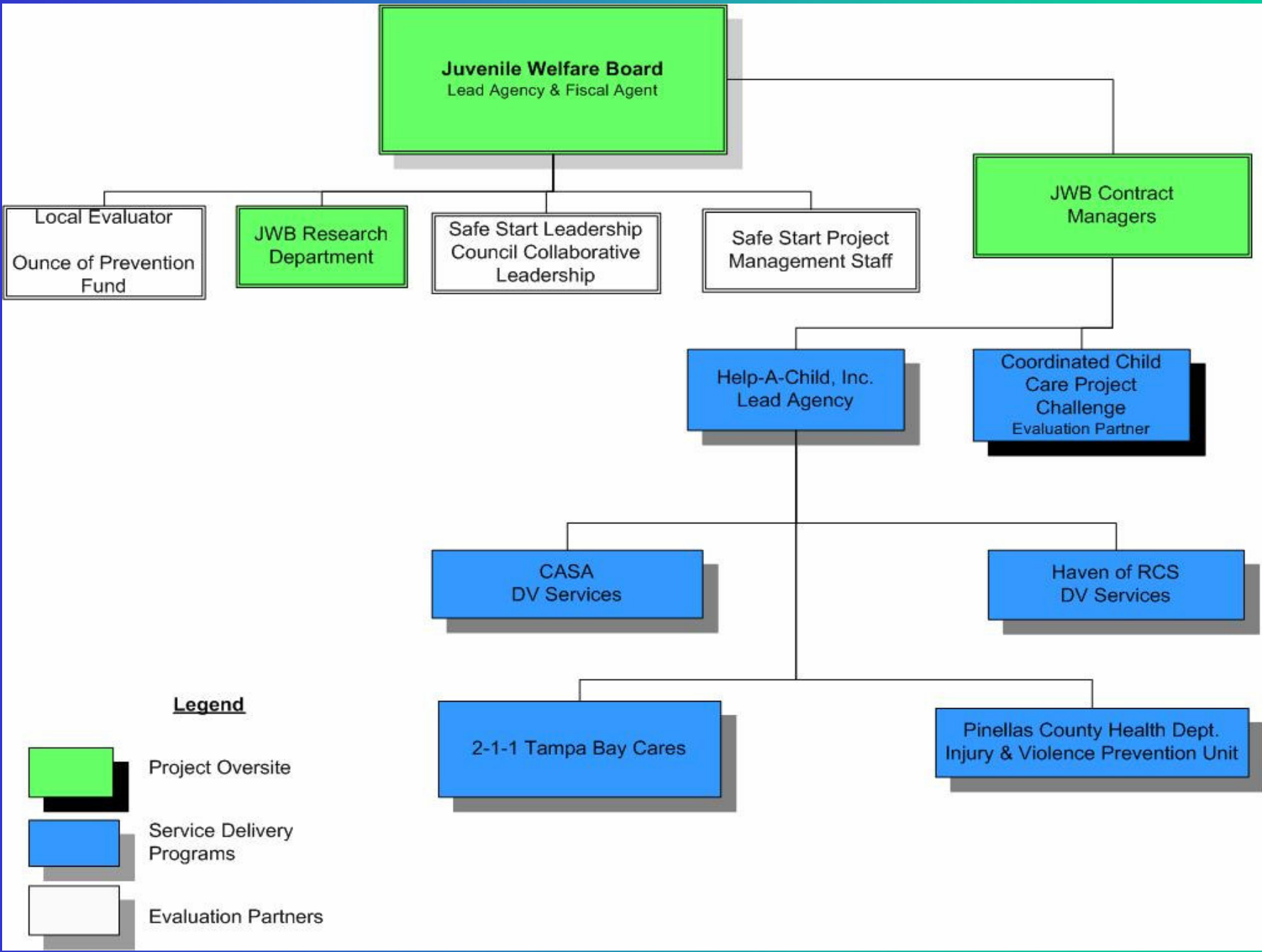
Over arching research question: *Does an intervention that utilizes the principles of family support and customer service improve family engagement and linkage to services?*

- *Expected Number of Cases: 100*
- *Time frame for Research:*
- *Data Collection: May 2004 to September 2005*
- *Data Analysis & Reporting: May-December 2005*

# Tier II Plan

## Measurement/Assessment Tools to be used:

- Parenting Stress Index,
- Temperament and Atypical Behavior Scale,
- Family Service Plan
- Risk & Protective Factor Data Matrix



**Legend**

- Project Oversight
- Service Delivery Programs
- Evaluation Partners

## Tier II Plan

- **Partners involved in the process:** Coordinated Child Care, Help-A-Child, Juvenile Welfare Board & Ounce of Prevention Fund of Florida
- **Methodology Type:** Case study using pre-test post-test measures at three time points; intake, linkage and follow-up

# Tier II Plan

**This proposed evaluation enhancement will inform Safe Start research on two levels:**

- **Individual Level**
- **Systems Level**

# Individual Level Enhancement

- At the individual level the analysis can provide comprehensive profiles of the individuals who are successful in achieving program goals.
  - Developed a Risk/Resiliency Matrix so data can be extracted from files and combined with data collected by the MIS.

# Individual Level Enhancement

- The analyses will assist local providers in determining what works in engaging families with children exposed to violence in treatment interventions.
  - Follow-up with clients to determine service linkage and reasons for not linking with referred services.



# Systems Level Enhancement

- At the systems level, the findings will assist the partnership team in further refining their service decision tree.
  - The decision tree will assist partners and other service providers in CEV identification, assessment and referral decisions that currently the site staff has not had the time or resources to develop.

# Data Management Enhancement

- The enhancement funds will provide the evaluation team the additional resources needed to combine several data sources for analyses.

# Tier II Progress to Date

- Resiliency Matrix Developed and approved by partners
- Approval by partners to extract data
- Interviews with potential data extractors has begun
- Decision Tree (AKA Information/Referral Form) in the field and being used by partners & other service providers
- Conversion of the PSI Long Form to Short Form completed
- Development of ACCESS data base for resiliency matrix in progress
- Linking of PSI, TABS and Resiliency Matrix Data base in Progress

# PSI Information

<b>PSI Domain Means by Program</b>			
<b>Subscales</b>	<b>Pre-test Mean</b>	<b>Mid-test Mean</b>	<b>Post-test Mean</b>
<b>Help A Child</b>			
Child Domain	110.35	27.83	25.70
Parent Domain	124.39	28.70	24.57
Total Stress	234.74	78.91	72.22
<b>CCC- Project Challenge</b>			
Child Domain	130.38	34.94	34.88
Parent Domain	144.63	28.94	27.19
Total Stress	275.00	89.31	85.81

# TABS Data through March 2005

TAB Results						
Administration	Help A Child			CCC-Project Challenge Safe Start		
	At Risk	Atypical	Typical	At Risk	Atypical	Typical
Pre-test	1	12	8	1	7	0
Mid-test	1	0	1	0	0	0
<b>Total</b>	<b>2</b>	<b>12</b>	<b>9</b>	<b>1</b>	<b>7</b>	<b>0</b>

## Next Steps

- Data extractors will start case file reviews in late May
- Other partners of the SSPC have offered to have data from their case files reviewed
- Once the data is entered, analysis will begin
- Report should be completed by January 2006