

Overview of Safe Start National Evaluation Phase 2

January 15, 2004



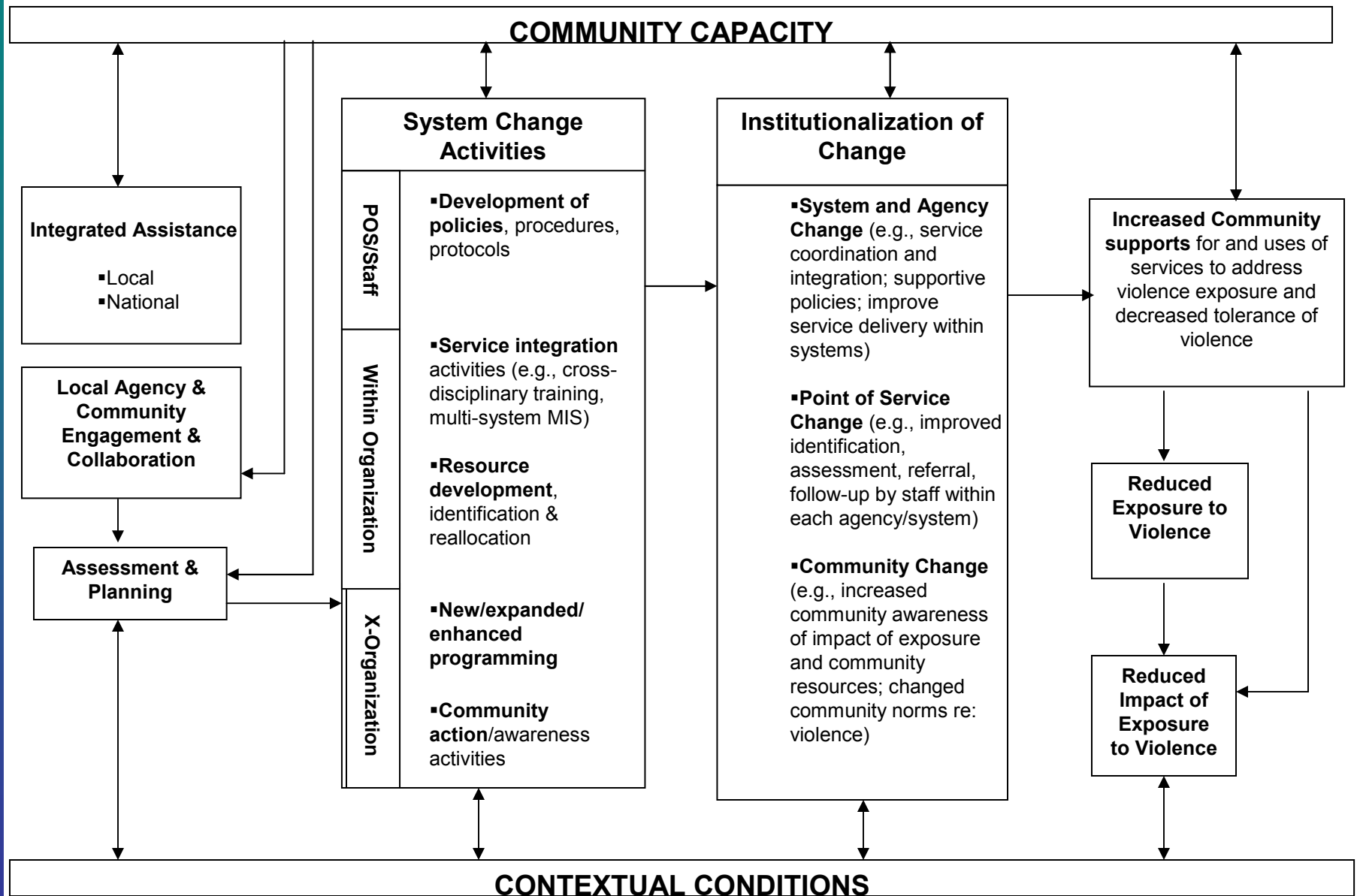
Association for the Study and Development of Community
312 South Frederick Avenue ♦ Gaithersburg, MD 20877
Phone: (301) 519-0722 ♦ Fax: (301) 519-0724
www.capablecommunity.com ♦ asdc@capablecommunity.com

Purpose

- To build the knowledge base of emerging promising practices that reduce the impact of exposure to violence on young children



Safe Start National Logic Model



Tier I

- All sites will participate
- Includes existing Impact Assessment (systems change), Intervention Research, and available process data
- No new local data collection required
- Local data reported according to Safe Start National Initiative Logic Model
- Case studies developed with NET including process and core database information.



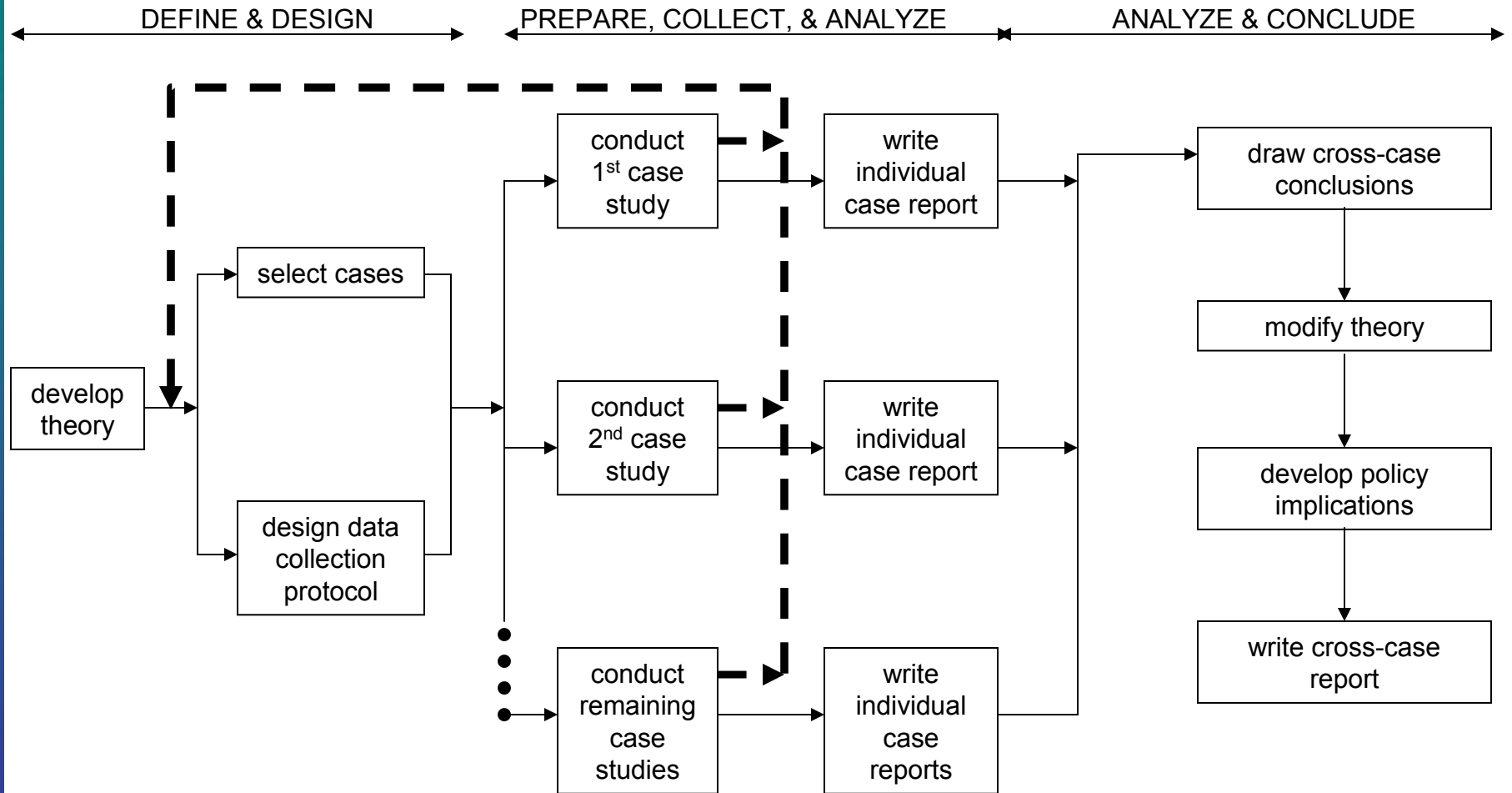
Tier II

Purpose:

To enhance the evaluation of intervention and treatment programs that show promise for developing new knowledge for the field about how to reduce the impact of exposure to violence in young children



Multiple Case Study Method



SOURCE: COSMOS Corporation

Yin, R.K. (1994). *Case Study Research: Design and Methods* (2nd ed.). Thousand Oaks, CA: Sage Publications



Association for the Study and Development of Community

January 15, 2004

Support for Tier II

- Up to \$75,000 for two years
- Additional technical and research assistance
- Assistance in publishing and presenting results



Tier II Program Criteria

- Knowledge based approach to intervention or treatment
- Well defined and replicable program design
- Provides a continuum of care
- Culturally and otherwise appropriate for population, organizations, and community
- Appropriate for clientele
- Part of a systems improvement effort



Tier II Evaluation Designs Should:

- Feasibly measure changes in predicted outcomes
- Contain multiple outcome measures
- Use valid and reliable measures or develop valid and reliable measures
- Be generally accepted methods for determining program outcomes
- Enhance current evaluation efforts



Additional Tier II Requirements

- Final evaluation plan
- Final report in format and standards of a refereed social science journal
- Other requirements of Tier I



Questions to Consider for Tier II Application

- Using either previous research or other knowledge sources, how does the intervention or treatment program “test” or enhance what is known?
- How can funds be used to enhance the evaluation according to criteria?
- Why is this enhancement proposal feasible?
- What have you learned so that shows promise for additional investigation?



Components of Tier II Application Process

- RFA
- Proposal
- Budget
- Technical Work Group-NET review
- Possible Site Visits

