

# Overview of Safe Start National Evaluation Phase 2

February 5, 2004



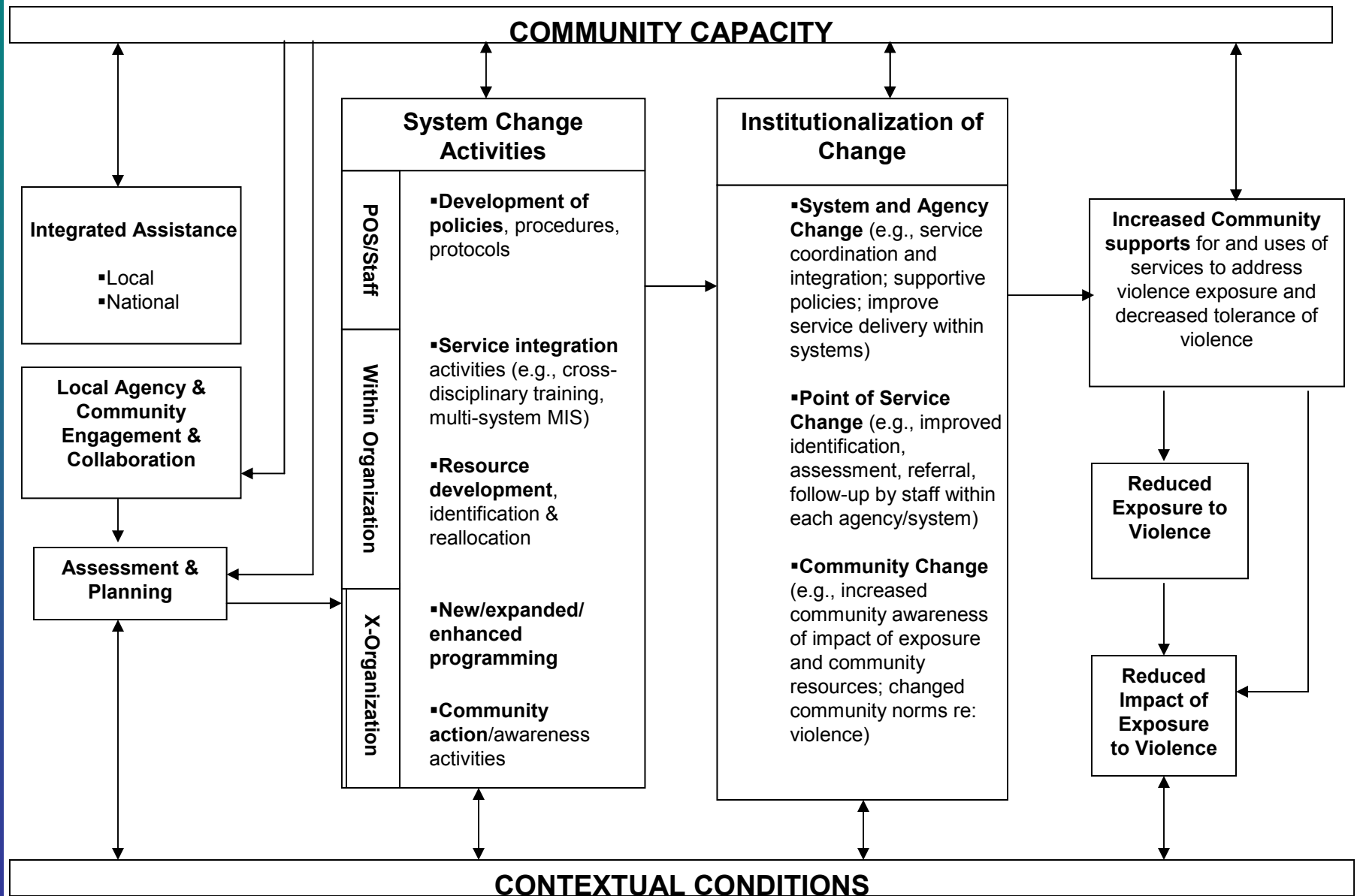
**Association for the Study and Development of Community**  
312 South Frederick Avenue ♦ Gaithersburg, MD 20877  
Phone: (301) 519-0722 ♦ Fax: (301) 519-0724  
[www.capablecommunity.com](http://www.capablecommunity.com) ♦ [asdc@capablecommunity.com](mailto:asdc@capablecommunity.com)

# Purpose

- To build the knowledge base of emerging promising practices that reduce the impact of exposure to violence on young children



# Safe Start National Logic Model



# Tier I

- All sites will participate
- Includes existing Impact Assessment (systems change), Intervention Research, and available process data
- No new local data collection required
- Local data reported according to Safe Start National Initiative Logic Model
- Case studies developed with NET including process and core database information
- Data files on outcome studies.



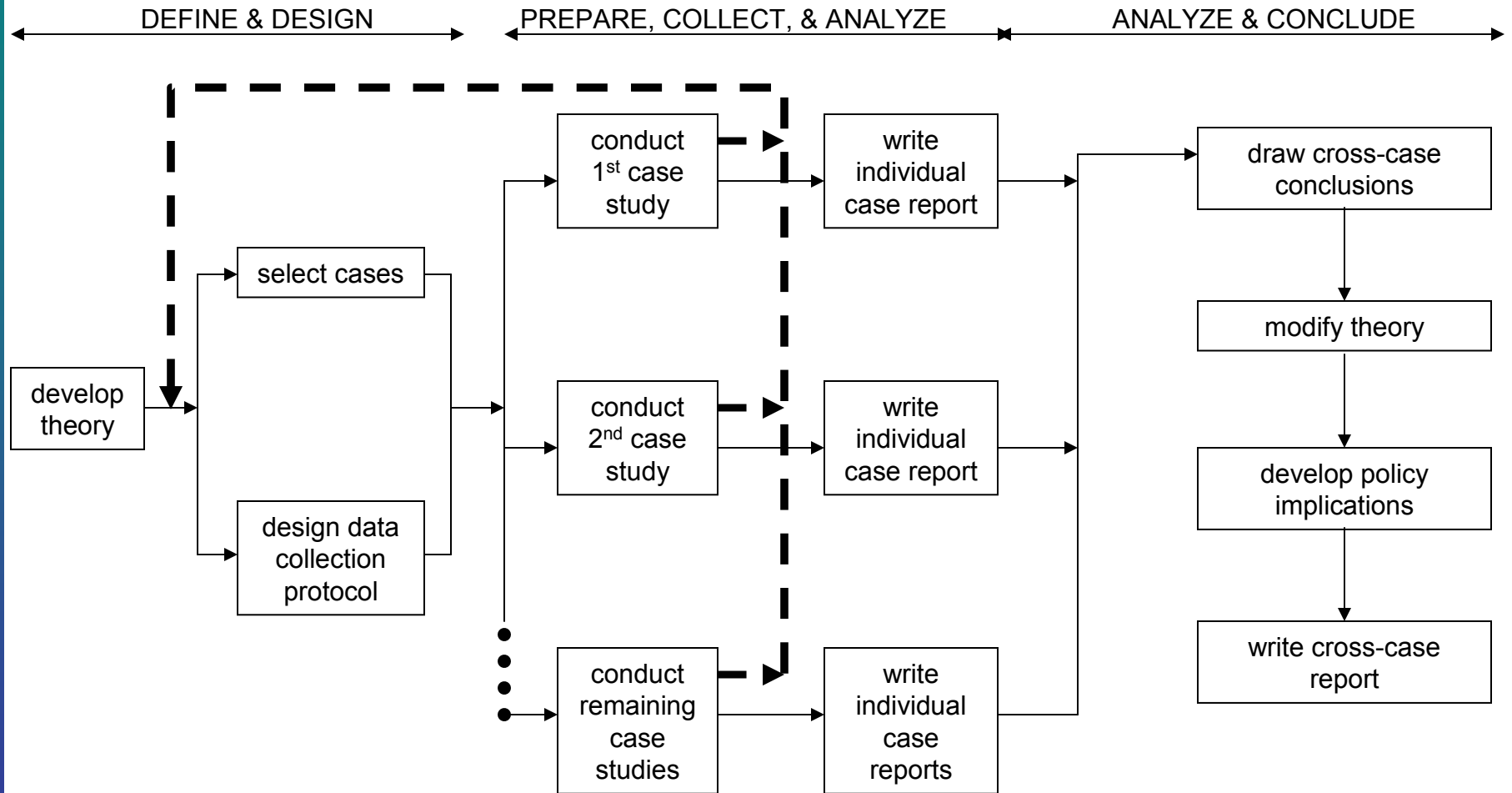
# Tier II

Purpose:

To enhance the evaluation of intervention and treatment programs that show promise for developing new knowledge for the field about how to reduce the impact of exposure to violence in young children



# Multiple Case Study Method



SOURCE: COSMOS Corporation

Yin, R.K. (1994). *Case Study Research: Design and Methods* (2<sup>nd</sup> ed.). Thousand Oaks, CA: Sage Publications



Association for the Study and Development of Community

January 15, 2004

# Support for Tier II

- Up to \$75,000 for two years
- Additional technical and research assistance
- Assistance in publishing and presenting results



# Tier II Program Criteria

- Knowledge based approach to intervention or treatment is the priority
- Well defined and replicable program design
- Provides a continuum of care
- Culturally and otherwise appropriate for population, organizations, and community
- Appropriate for clientele
- Part of a systems improvement effort





# Tier II Evaluation Designs Should:

- Feasibly measure changes in predicted outcomes
- Contain multiple outcome measures
- Use valid and reliable measures or develop valid and reliable measures
- Be generally accepted methods for determining program outcomes
- Enhance current evaluation efforts



# Additional Tier II Requirements

- Final evaluation plan Tier II
- Final report in format and standards of a refereed social science journal
- Other requirements of Tier I



# Other Potential Tier II Investigations

- Client and family recruitment, including identification and assessment;
- Client and family retention;
- Special needs and approaches to providing services in rural areas;
- Programming that provides services to families of language/ethnic/racial minority groups;
- Unusual treatment settings; and
- The prevention aspect of the initiative



# Questions to Consider for Tier II Application

- Using either previous research or other knowledge sources, how does the intervention or treatment program “test” or enhance what is known?
- How can funds be used to enhance the evaluation according to criteria?
- Why is this enhancement proposal feasible?
- What have you learned so that shows promise for additional investigation?



# Components of Tier II Application Process

- Conversations
- Proposal
- Budget
- Technical Work Group-NET review
- Possible Site Visits

